

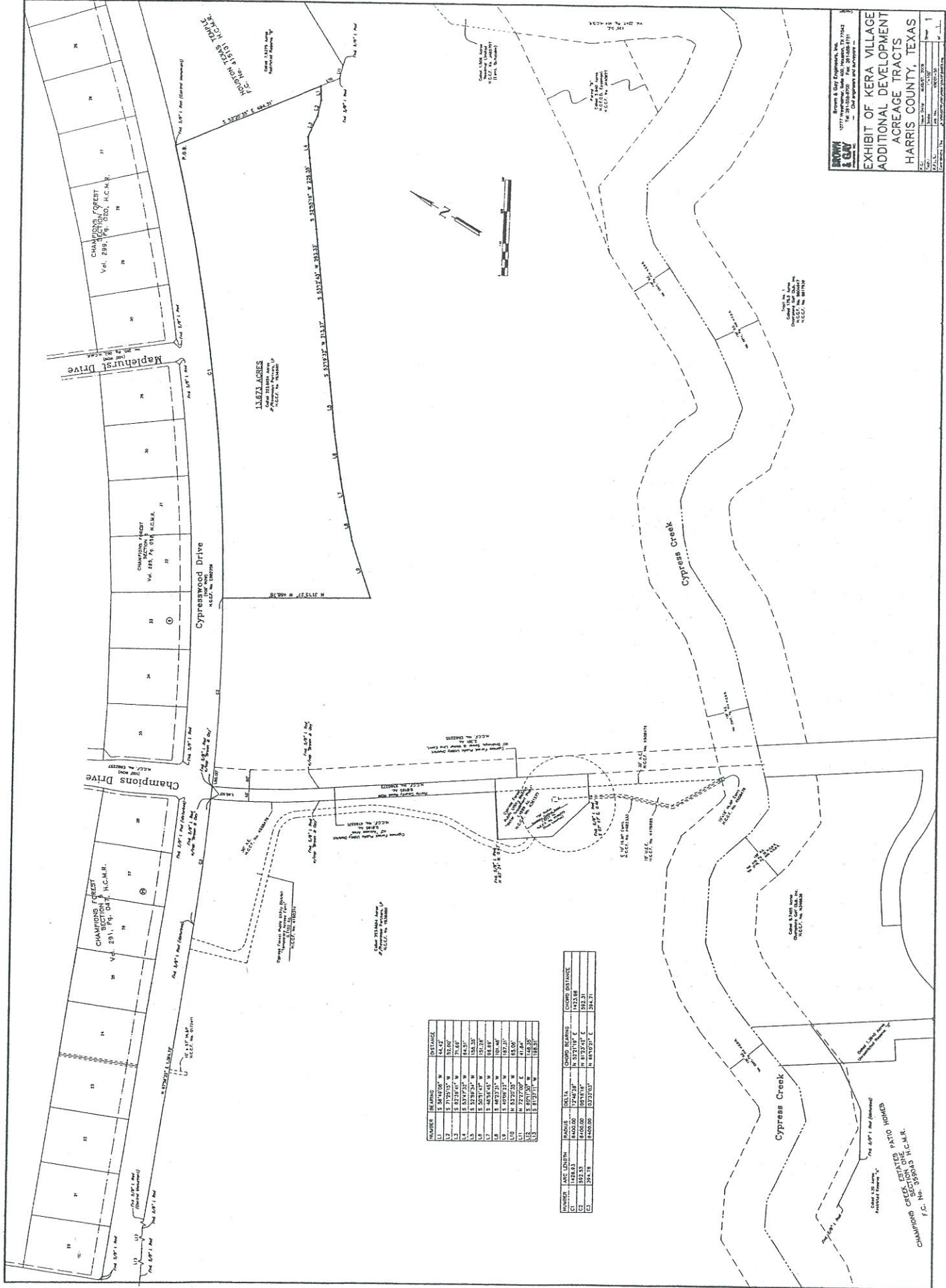
Exhibit "N"
(Map of 32.66 Acre Tract - Also known as 31 Acre Tract)

EXHIBIT "N"



**CYPRESS FOREST PUD 32.66 ACRE-TRACT
WITHIN THE RAVENEAUX GOLF COURSE**

Exhibit "O"
(Metes and Bounds and Map of 13.67 – Also known as 15 Acres)



NUMBER	BEARING	DISTANCE
11	S 36°18'00" W	44.42'
12	S 71°29'30" W	33.00'
13	S 83°30'00" W	71.63'
14	S 83°30'00" W	128.25'
15	S 50°31'00" W	151.28'
16	S 49°38'30" W	188.83'
17	S 49°09'30" W	197.21'
18	S 53°20'30" W	185.00'
19	S 27°00'00" E	118.00'
20	S 81°30'00" W	128.30'

NUMBER	ARC LENGTH	RADIUS	DELTA	CHORD BEARING	CHORD DISTANCE
21	135.00'	1414.21'	90.00°	S 32°17'30" E	1453.98'
22	135.00'	1414.21'	90.00°	N 57°42'30" E	1453.98'
23	270.00'	2828.42'	180.00°	N 67°02'30" E	2844.21'

CHAMPIONS CREEK ESTABLISHED BY PATIO HOLDING
 CHAMPIONS CREEK ESTABLISHED BY H.C.M.R.
 I.C. No. 338493 H.C.M.R.